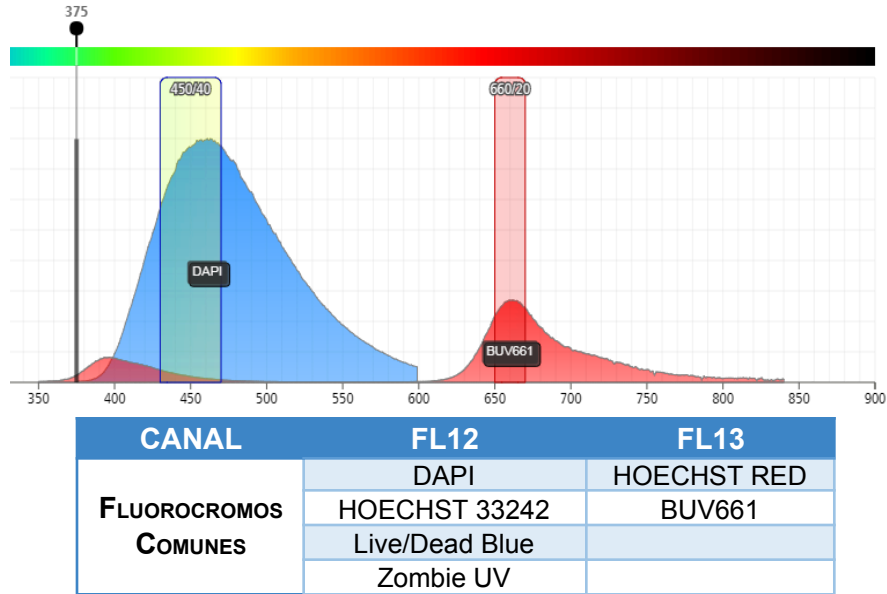


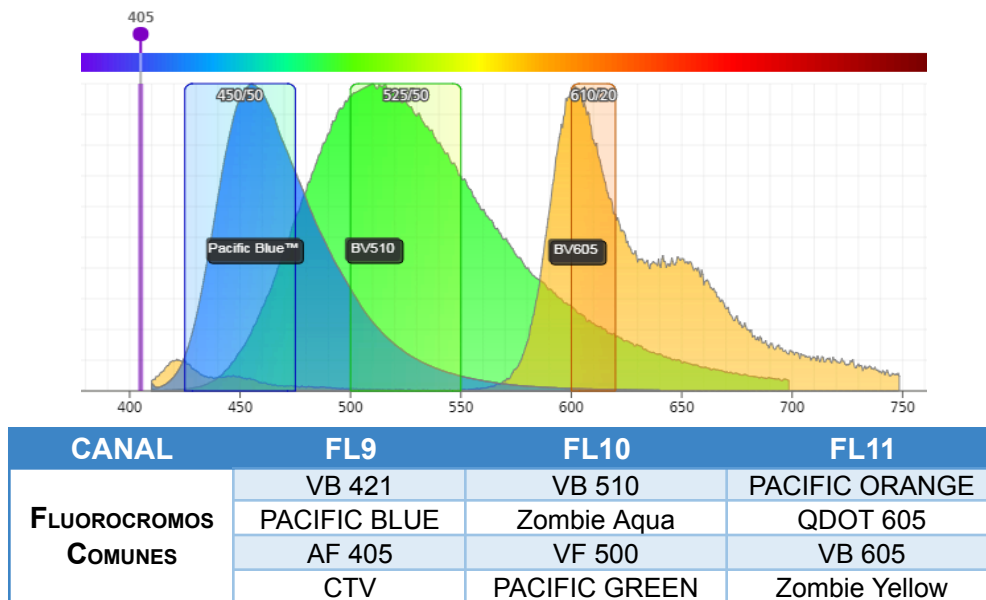
**Configuración Cytoflex S**

Configuración óptica  
**Cytoflex S**  
 LNC-PNG03/R05-006

**1. LASER NIR-UV**

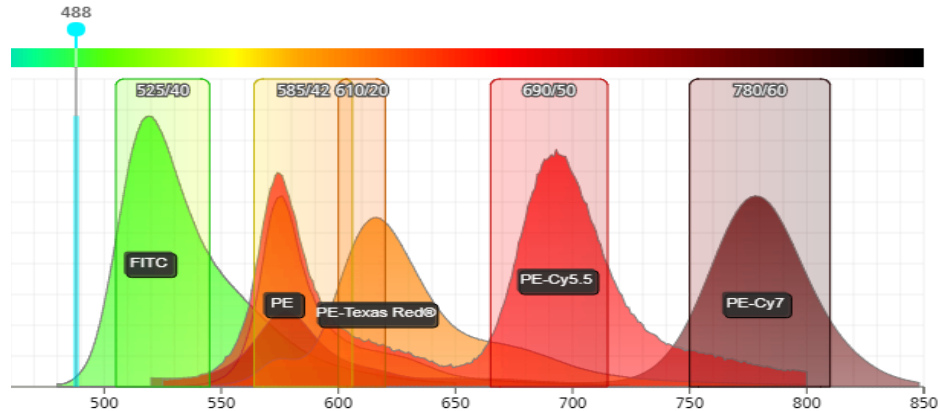


**2. LASER VIOLETA**



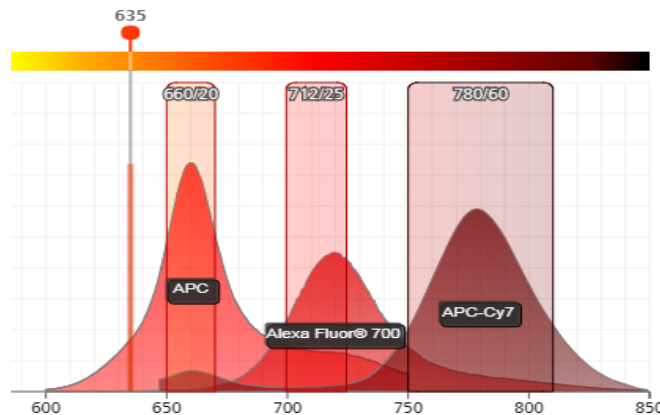
Configuración Cytoflex S

3. LASER AZUL



CANAL	FL1	FL2	FL3	FL4	FL5
FLUOROCROMOS COMUNES	FITC	PE	PE-Texas Red	PE-Cy5	PE-Cy7
	AF 488	IP	PE-CF594	PE-Cy5.5	PE-AF750
	BB 515	YFP	RFP	7AAD	QDOT 800
	GFP		mCherry	QDOT 705	
	CSFE		DsRed	PerCp Cy5.5	

4. LASER ROJO



CANAL	FL6	FL7	FL8
FLUOROCROMOS COMUNES	APC	AF 700	APC-Cy7
	AF 647	APC-AF 700	APC-H7
	QDOT 655	QDOT 705	APC-AF 750
			Zombie NIR