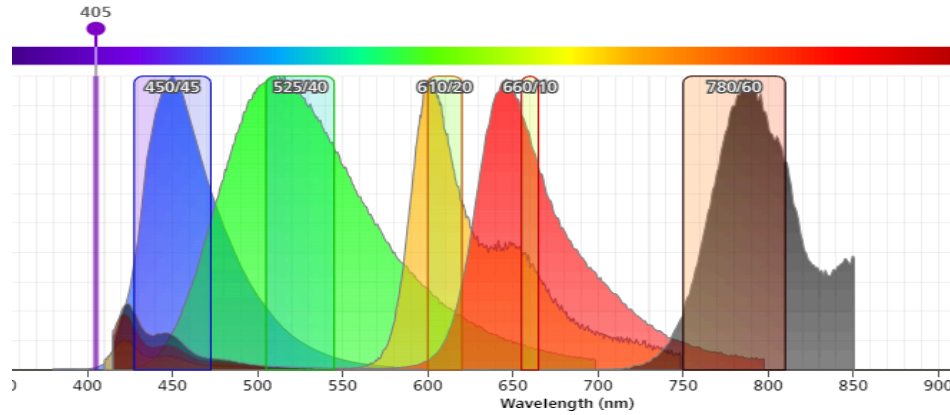


Configuración Cytoflex SRT

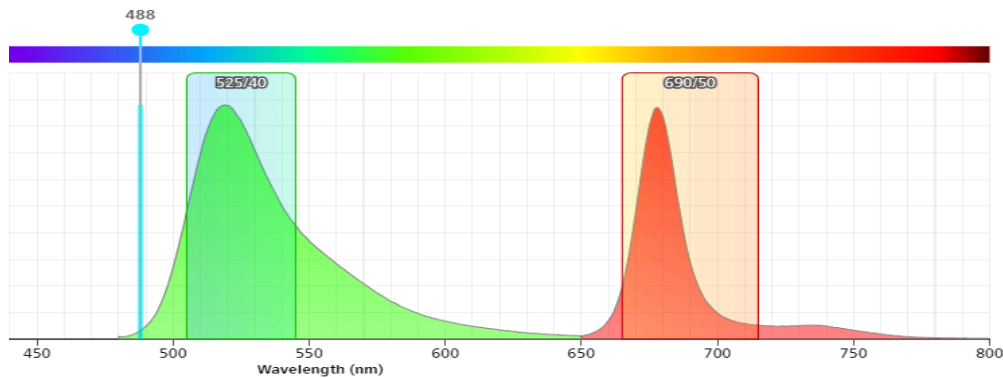
Configuración óptica
Cytoflex SRT
 LNC-PNG03/R05-011

1. LASER VIOLETA



CANAL	FL1	FL2	FL3	FL4	FL5
FLUOROCROMOS	PB	KO	BV605	BV650	BV780
COMUNES	PB450	KO525	Violet610	Violet660	Violet780
	BV421	BV510			
		AmCyan			

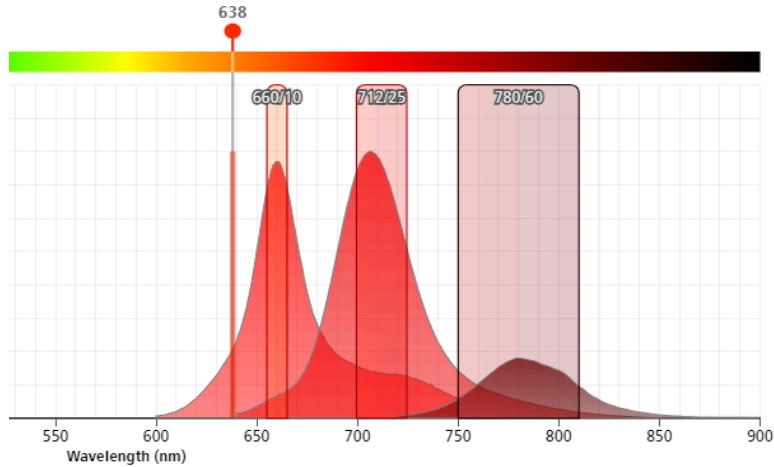
2. LASER AZUL



CANAL	FL6	FL7
FLUOROCROMOS	FITC	PerCp
COMUNES	AF488	PE-Cy5
	CFSE	PE-Cy5.5
	GFP	PI

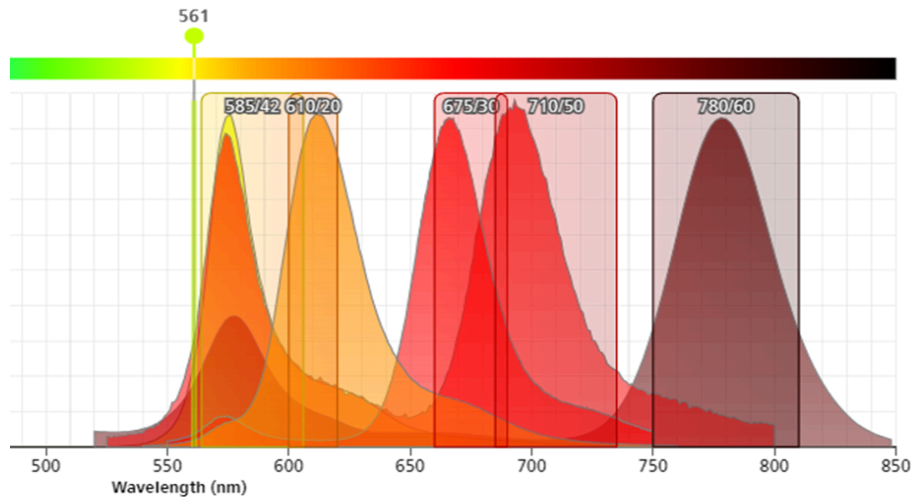
Configuración Cytoflex SRT

3. LASER ROJO



CANAL	FL8	FL9	FL10
FLUOROCROMOS COMUNES	APC AF647	APC-AF700 AF700	APC-AF750

4. LASER AMARILLO



CANAL	FL11	FL12	FL13	FL14	FL15
FLUOROCROMOS COMUNES	PE DsRed	ECD mCherry PE-CF594	PE-Cy5 PE-AF680	PE-Cy5.5	PE-Cy7